

# Be prepared

## Lessons from our past

Please read this guide carefully and learn how you can help to protect your family, property or business from floods.

The Katherine area has flooded several times in the past:

April 1931, January 1940, March 1957, January 1998 and April 2006.

During the 1998 floods in the Katherine area, 5000 people had to evacuate their homes and almost 2000 buildings were flood damaged.

Source: Australian Government EMA Disasters Database

### Start preparing now! Set up your flood action plan.

### Are you at risk from flood?

Please review the likely flood extent on the Katherine Town Flood Extent Map on the other side of this brochure.

Additionally, you can view or download Flooding Maps - Katherine and Rural Areas from [www.emergency.nt.gov.au](http://www.emergency.nt.gov.au)

If you live or work in a flood-prone area, plan where you will evacuate; to either family, friends or an emergency shelter. Familiarise yourself with safe road routes.

Remember, even if your property is not inundated by flood water, you may become isolated during a flood.

### Check your insurance cover

Check that your property and contents are covered by insurance for flood damage. Once an alert is issued, many companies will not renew, update or provide new insurance policies.



Stairs at the top of the Katherine Hot Springs, April 2006 (photo by John Green)

### Every household needs a basic emergency kit

A basic emergency kit stored in a water-proof container should be ready all year round. This could double up as your camping kit.

Check supplies and restock your kit at the beginning of every wet season. Plan what you will need for each person for at least three days.

Your basic emergency kit should include:

- ☒ Your flood action plan
- ☒ Your emergency contact numbers, mobile phone charger
- ☒ A portable radio and torch with spare batteries
- ☒ A first aid kit and rubber gloves
- ☒ Toilet paper and essential toiletries
- ☒ A waterproof bag for clothing and valuables
- ☒ Non-perishable food and fresh water for at least three days

You may need your kit either at home or if you evacuate and stay with family, friends or at an emergency shelter.

If a Flood Warning is issued, you will need to check supplies and add other items to your emergency kit.

# If a warning is issued


The actual flood extent may vary significantly throughout the Katherine district. If a flood warning is issued, these are some considerations to be aware of, however, a more active response may be required in your area.

### Activate your flood action plan

- Ensure family and neighbours are aware of the situation
- Check your car and refuel
- Check gas bottles and fill
- Charge mobile phone

### Add to your emergency kit

- ☒ Important documents, cash money and small valuables
- ☒ Medications and any special requirements for babies and the elderly
- ☒ A change of clothes for each person, waterproof jacket and strong, protective closed shoes
- ☒ Swag, blankets and bedding



Listen to the radio for updates, information and advice.

106.1 FM ABC Radio Katherine

### Be prepared to evacuate if advised by authorities

- Listen to the radio for information and follow directions
- Empty freezers and refrigerators, leaving doors open
- Turn off the power, gas and water at the mains
- Whether you stay or leave, place a sandbag in the toilet bowl to prevent sewage backflow into your home

### Protect your property

- A more active response may be required in your area
- Stack furniture and possessions above likely flood level, on beds and in the roof (electrical items on top)
- Move garbage, chemicals and poisons to higher ground
- Secure objects that could float and cause damage
- Protect or relocate valuables and lock your home when you leave



Katherine Gorge, April 2006 (photo by Parks and Wildlife Commission)

# Take precautions



After a flood, make sure the electricity and gas is turned off BEFORE going inside your home.

- Keep your emergency kit safe and dry
- Do not eat food which has been in contact with flood water
- Boil tap water until water supplies are declared safe
- Do not use gas or electrical appliances that have been flood affected, until they have been safety checked
- Beware of snakes and spiders which may move to drier areas inside
- Follow official warnings and advice on radio, TV and online

Entering floodwaters can be deadly and should be avoided wherever possible. Road damage is not easily visible and conditions can change rapidly even when water starts to recede. Do not take unnecessary risks.

- If you must venture out:
- Check for safe routes before driving anywhere
  - Do not enter water without checking depth and current
  - Drive slowly through flooded sections to reduce wave action and possible damage to property



NTES Katherine Volunteer Unit Flood Boat Training (Photo by NTES Katherine Volunteer Unit)

### Pets

Do not take pets to emergency shelters.

If you have pets and cannot arrange for friends or relatives on higher ground to look after them, take your pet and a three day supply of food to the Animal Shelter located at the Katherine Town Council Depot in Chardon St, Katherine East. Refer to map overleaf, location point E.

If you feel it is safe to leave your pet at home, do not tie it up or cage it, let it look after itself. Leave out food and water above the predicted flood height.

Approach pets cautiously when reunited after a flood, as fear and anxiety may cause them to become aggressive.

### Vehicles, Boats and Caravans

If you own a boat that may be utilised for evacuations, please ensure it is reliable and ready for use by the authorities. Please provide details of the boat at the police station or phone 131 444.

An emergency compound for vehicles, boats and caravans will be established at Crawford St, Katherine East. Refer to map overleaf, location point F.

A vehicle hard stand on Gorge Road (near Jaensch Road) will also be activated if required. Refer to map overleaf, location point G.

Contact the Katherine Town Council for further details.

# Stay informed

ABC Katherine Radio	106.1 FM
Community Radio	101.3 FM
Police Assistance	131 444
NT Emergency Service Assistance	132 500
Road Report (Recorded Information)	1800 246 199 <a href="http://www.roadreport.nt.gov.au">www.roadreport.nt.gov.au</a>
Bureau of Meteorology (BOM)	1300 659 214 <a href="http://www.bom.gov.au/nt">www.bom.gov.au/nt</a>
Katherine Hospital	8973 9211
Power and Water Corporation	1800 245 092 <a href="http://www.powerwater.com.au">www.powerwater.com.au</a>
Katherine Town Council	8972 5500 <a href="http://www.ktc.nt.gov.au">www.ktc.nt.gov.au</a>
Australian Government Emergency Management	<a href="http://www.em.gov.au">www.em.gov.au</a>

Katherine Flood Maps, Fact Sheets and Advice

Northern Territory Emergency Service

[www.emergency.nt.gov.au](http://www.emergency.nt.gov.au)

Bureau of Meteorology Weather Warnings 1300 659 214

Life threatening emergencies 000

SecureNT - your gateway to information on preparing for and getting through emergency situations in the Northern Territory

[www.secureNT.nt.gov.au](http://www.secureNT.nt.gov.au)

 [facebook.com/secureNT](https://facebook.com/secureNT)

 [twitter.com/secureterritory](https://twitter.com/secureterritory)

Flood Safe Katherine

A guide to help you protect your family and property from floods



Katherine Old Railway Bridge, April 2006 (photo by Richard Coburn)



Northern Territory  
Emergency Service



NORTHERN  
TERRITORY  
GOVERNMENT



# Emergency shelters

The decision to open emergency shelters, and when, is made by the Katherine Regional Emergency Controller.

You should seek refuge with family or friends in the first instance. Emergency shelters should only be used when alternative accommodation cannot be found. Shelters may be crowded, noisy and uncomfortable.

Register on arrival at the emergency shelter. For major incidents, the Red Cross may activate its *Register. Find. Unite* service. This is used to unite families and close friends of persons affected by an emergency.

**The possession of alcohol and illicit drugs is NOT permitted at emergency shelters.**

Alternative arrangements should be made for pets as they are not permitted at emergency shelters. See overleaf for more information.

## Katherine Emergency Shelters

There are three designated emergency shelters located in Katherine East. These are displayed as a **red location point** on the Katherine Town - Flood Extent maps.

- Emergency Shelters**
- A** Katherine High School, Grevillea Road
  - B** MacFarlane Primary School, Grevillea Road
  - C** Casuarina Primary School, corner of Casuarina Street and Needham Terrace
- Additional emergency shelters may be established according to the severity and location of flooding.
- Other identified emergency location points are:
- D** Emergency Operations Centre Police Station, Stuart Highway
  - E** Animal Shelter, Chardon Street (Industrial Area)
  - F** Vehicle Compound, Crawford Street (Industrial Area)
  - G** Vehicle Hard Stand, Gorge Road (east of Jaensch Rd)

## Information about the flood extent

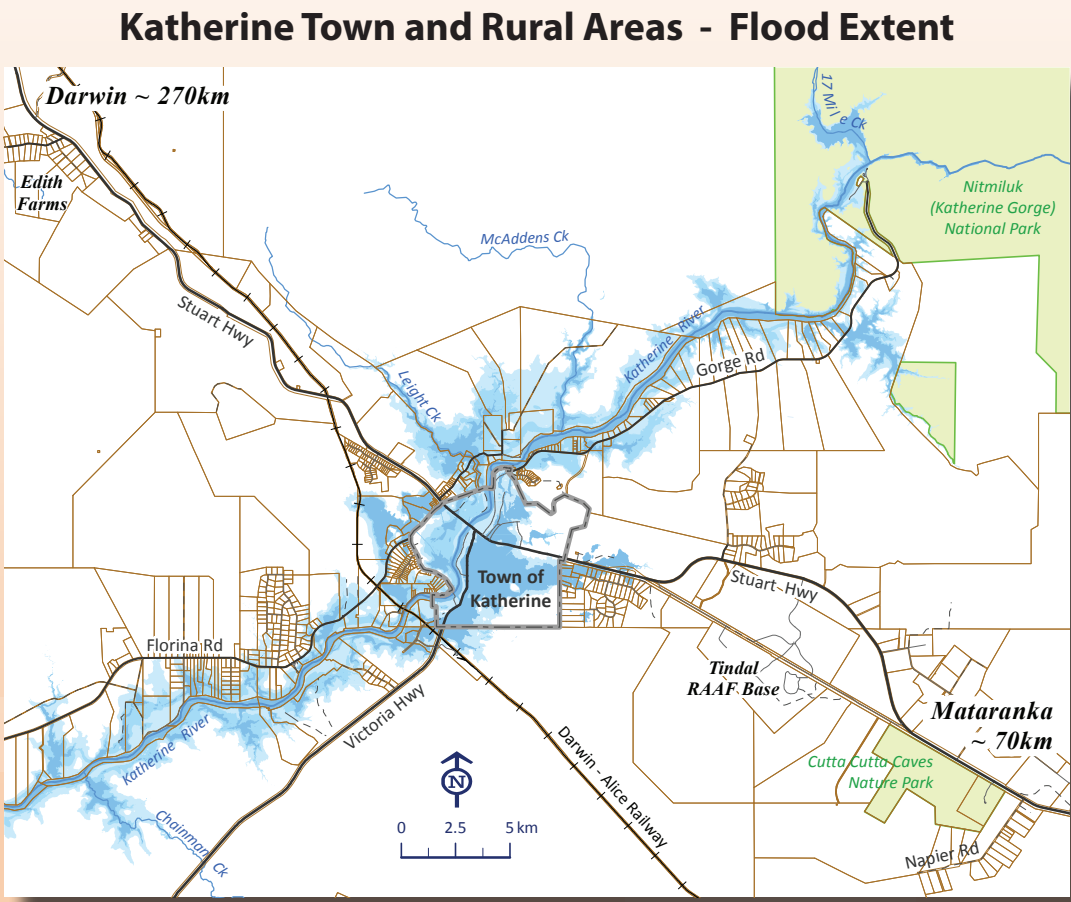
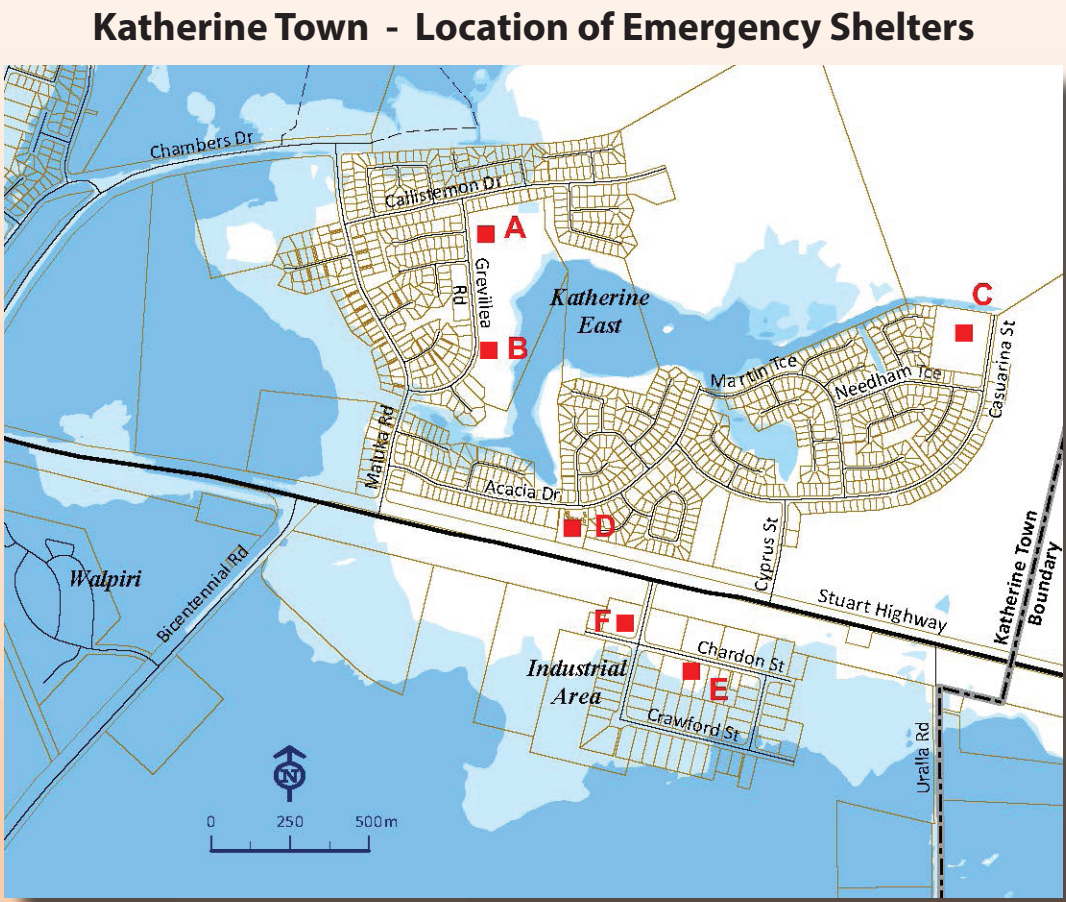
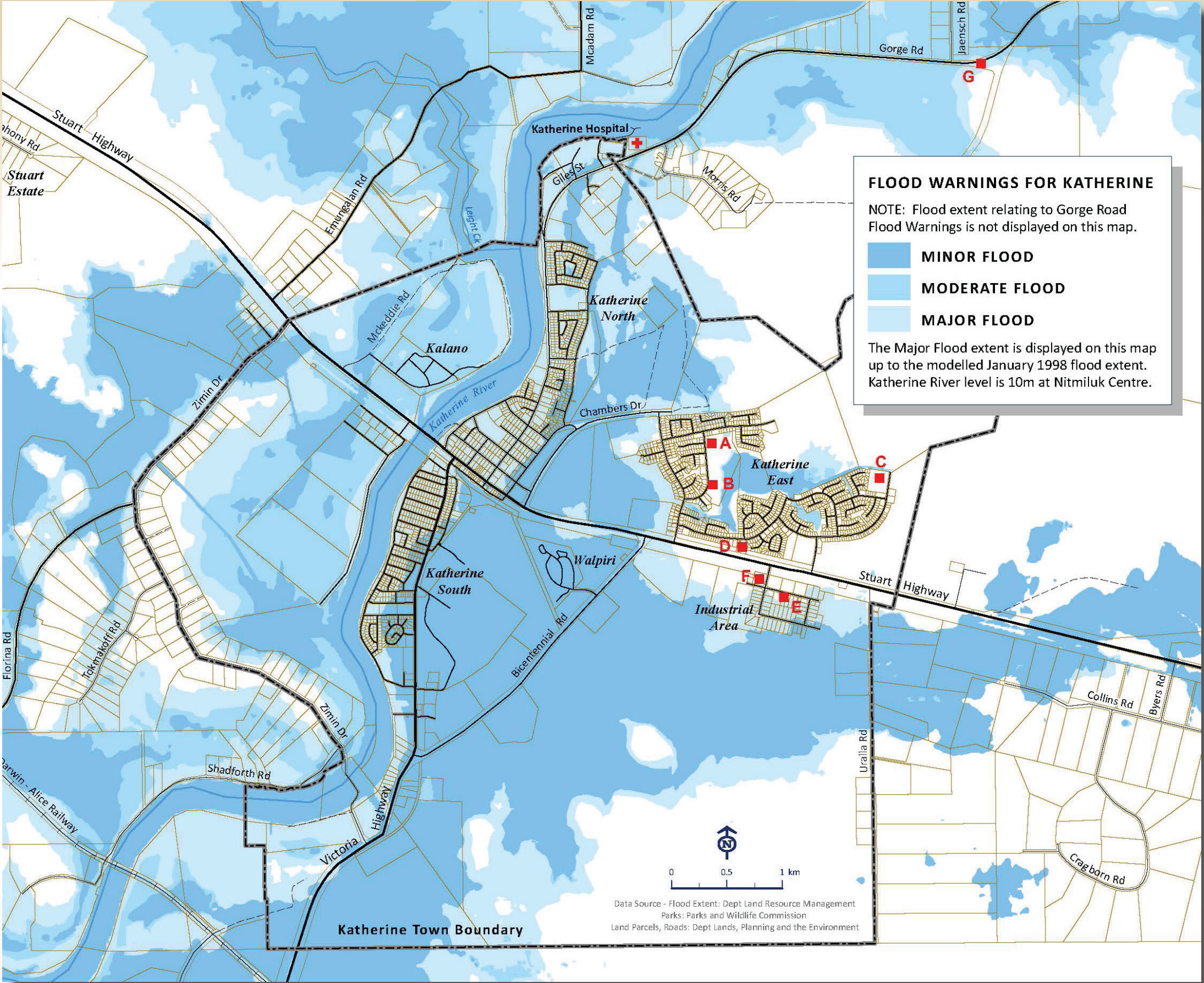
- The flood extent boundaries displayed are only approximate
- This information should only be used as a guide
- No two flood events are the same
- The actual extent during a flood may vary significantly at some locations
- The maps in this brochure do not show water depth levels when flows and flooding occur



Sabu Sing walks on water, April 2006 (photo by Rod McLennan)

# Katherine township - flood extent

**Katherine River levels are measured upstream near the Nitmiluk Visitor Centre and the Katherine Bridge. The maps display the extent of likely inundation areas about 12 hours AFTER the Flood Warning has been issued.**



# Flood warnings

Katherine Flood Warnings are issued by the Bureau of Meteorology via the NT Emergency Service and the media.

**Minor - Gorge Road**

*This warning is issued when the Katherine River level is predicted to exceed 3.0 metres at the Nitmiluk Centre.*

*General Situation:* Floodwaters are contained within the river banks. Maud Creek crossing is likely to close, isolating residents and tourists along Gorge Road and Nitmiluk (Katherine Gorge) National Park.

**Minor - Katherine; and Moderate - Gorge Road**

*This warning is issued when the Katherine River level is predicted to exceed 5.5 metres at the Nitmiluk Centre and 16.0 metres at the Katherine Bridge.*

*General Situation:* Flood waters are still largely confined within riverbanks. Maud Creek will be closed and a rise in the level could close Gorge Road at Bullock Creek Crossing (Morris Road) and likely to flood areas of Kalano Community and Florina Road crossings.

**Moderate - Katherine; and Major - Gorge Road**

*This warning is issued when the Katherine River level is predicted to exceed 6.5 metres at the Nitmiluk Centre and 16.5 metres at the Katherine Bridge.*

*General Situation:* Maud Creek and Bullock Creek (Morris Road) crossings will be closed. Some flooding will occur near Emungalan Road and Kalano Community. Flooding will occur at Florina Road creek crossings. The Stuart Highway south of Katherine will also be affected, especially in the area of Tindal Creek where flood run off may close the highway. Flooding may occur along the western side of the Katherine River and the 'Rocks' area, as well as affecting property in the Bicentennial Road area.

**Major - Katherine. Standard Emergency Warning Signal (SEWS) is played on media**

*This warning is issued when the Katherine River level is predicted to exceed 17.5 metres at the Katherine Bridge.*

*General Situation:* Flood waters may cover extensive areas of the Central Business District and lower parts of the residential areas of the town both north and south of the Stuart Highway. The Stuart Highway could be cut by the depth of flood and flow rate between Katherine CBD and Katherine East. There could be an increasing flood run into the CBD. Katherine East may be isolated. Flooding will isolate the Hospital.

**Falling River Height Advice**

This stage is declared by the controller, when the river levels are falling and are predicted to continue falling.

## Standard Emergency Warning Signals (SEWS)

The Northern Territory Emergency Service coordinates regular communication updates during emergencies.

The media may be asked to play the SEWS to alert people of significant warning messages that are about to be announced. If you hear the SEWS on the radio or television, stop what you are doing and listen to the message.

The Katherine town sirens are no longer used.

For more information about flooding in the Northern Territory and to view **Flooding Maps - Katherine and Rural areas**, refer to

**[www.emergency.nt.gov.au](http://www.emergency.nt.gov.au)**

Department of Environment and Natural Resources (DENR)  
Maps in this brochure produced by DENR, 4 September 2012

Copyright Northern Territory of Australia

Apart from fair dealing for the purposes of private study, research, criticism or review, as permitted under the Copyright Act 1968, no part may be reproduced or reused for any commercial purposes whatsoever.

The Northern Territory of Australia does not warrant that the product, or any part of it, is correct or complete and will not be liable for any loss, damage or injury suffered by any person as a result of its inaccuracy or incompleteness.

This material was produced with funding provided by the Northern Territory and Australian Governments through the Natural Disaster Resilience Program, 2016/17